

# EPS

## ROOM SIGNS

Replace printed schedules with sleek, affordable electronic paper signs that are always up to date.

- Economical choice for displaying room schedules
- Wireless and battery-powered
- Display schedules for meeting rooms, classrooms, training rooms and more
- Show workspace reservations for office hoteling
- Save time, money and waste by replacing printed schedules

Our electronic paper signs (EPS) are the most cost-effective option to display current schedules outside your shared spaces – an inexpensive, wireless and battery-operated solution from Visix.

These compact displays can be placed virtually anywhere because they don't require any cabling. Easily mount them outside meeting rooms, classrooms, training rooms or any other space you reserve. You can also attach them to desks or cubicles used for workspace hoteling.

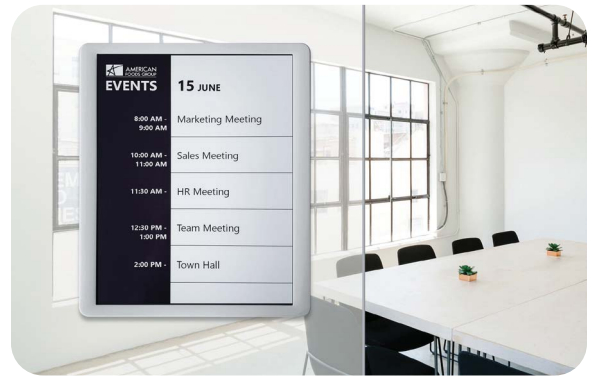
Paper-white signs have a bright display background with low reflectivity for high readability, and allow for both black and red colors on screen. The room signs are updated wirelessly via RF communication designed to minimize battery usage. A sign's batteries are only activated when information changes, which allows batteries to last an average of five years.

Calendar changes are delivered to EPS room signs throughout the day without any user intervention, so you no longer have to manage outdated paper schedules.

EPS room signs show data from popular event management systems, including:



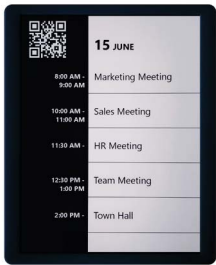
An EPS system can be used in conjunction with other Visix room signs and digital signage products, or as a completely stand-alone solution.



800.572.4935  
www.visix.com

# EPS Specifications

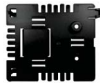
EPS signs come with a stylish frames and faceplates, and custom designs are also available. Custom faceplates can include raised room numbers, braille, different material finishes and your organization's logo.



EPS 125 Mount  
(not to scale)

## EPS 125

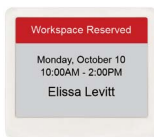
Display size: 9.78 x 7.8 inches eInk paper-white bistable EDP  
Resolution: 1304 x 984 (4:3 aspect ratio), 180 degrees viewing angle  
Orientation: Portrait or Landscape  
Dimensions: 8.7w x 10.9h x .47d inches  
Weight: 16 oz.  
Power: 1 ea. 4800 mAh lithium polymer (or LiPo) battery  
Mounting: Detachable mounting adapter with screw holes  
Faceplate: Dark grey or white plastic frame included; custom available



EPS 74 Mount  
(not to scale)

## EPS 74

Display size: 6.4 x 3.85 inches eInk paper-white bistable EDP  
Resolution: 800 x 480 (16:9 aspect ratio)  
Orientation: Portrait or Landscape  
Dimensions: 7.15w x 4.8h x 0.75d inches  
Weight: 10 oz.  
Power: 6 ea. CR2450 batteries  
Mounting: Detachable mounting adapter with screw holes  
Faceplate: Black plastic frame included; custom faceplates available



## EPS 42

Display size: 3.3 x 2.5 inches eInk paper-white bistable EDP  
Resolution: 400 x 300 (4:3 aspect ratio)  
Orientation: Portrait or Landscape  
Dimensions: 3.9w x 3.3h x 0.5d inches  
Weight: 3 oz.  
Power: 4 ea. CR2450 batteries  
Mounting: 3M Command Strips  
Faceplate: No frame included; custom faceplates available



## EPS 27

Display size: 2.4 x 1.2 inches eInk paper-white bistable EDP  
Resolution: 296 x 152 (16:9 aspect ratio)  
Orientation: Landscape  
Dimensions: 3.1w x 0.6h x 1.7d inches  
Weight: 1.3 oz.  
Power: 2 ea. CR2450 batteries  
Mounting: Mount provided for placement underneath desk edge  
Faceplate: Dark grey or white plastic bezel



## EPS RF Transmitter

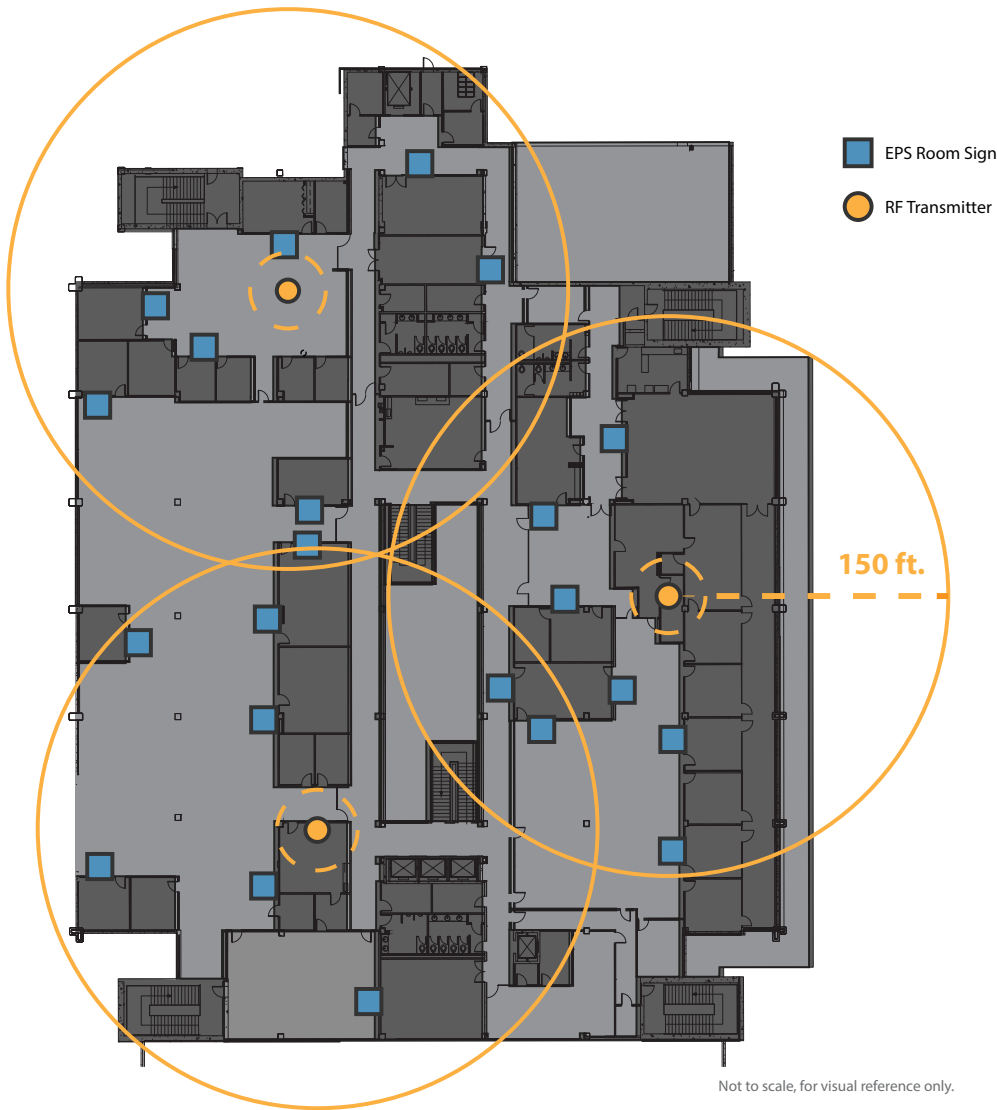
Dimensions: 6.2w x 4.5l x 1.4h inches  
Power: 1 x 10/100Mbit Ethernet port, Industry standard IEEE 802.3af PoE specification  
1 x DC power input (optional)  
RF Communication: IEEC 802.15.4a compliant  
RF Frequency: 915MHz ISM Band 2-way wireless  
LEDs: Power, connection and Ethernet activity  
Mounting: Integrated Wall/Ceiling Mount

Note: Conference and EPS Management applications require a PC running Windows Server 2016 or better and 8GB memory.

## How It Works

Our Conference application pulls together schedules from a variety of calendar programs, taking care of integration with the scheduling system you're already using. It supports multiple event management systems – and multiple instances of those systems – in the same installation, so it can easily support all the systems across an organization.

EPS Management software applies schedule data to selected templates and pushes updates to EPS room signs via RF transmitters. The software can also be used to check the status of room signs, check battery power levels and to deploy additional room signs.



Event Data Source



Visix Conference Application



EPS Management Suite



EPS RF Transmitter(s)



MeetingMinder™ Signs

Visit [www.visix.com](http://www.visix.com) to learn more, and contact us for pricing at [salesteam@visix.com](mailto:salesteam@visix.com).